

MEMBERS ON THE MOVE

Addition of Two Additional Dynamic Consulting Associates with George Simons International

George Simons International, a diversity management firm based in Santa Cruz, is pleased to announce the addition of two dynamic Consulting Associates to its staff. **Malati Shinazy, M. Ed.**, and **Nanci E. Luna Jimenez** will offer diversity training and consulting services, a line of training books

and videos, and the training board game **Diversophy™**, developed by George Simons International and MULTUS Inc.

Malati Shinazy, M.Ed., has over sixteen years' experience as a trainer, consultant and educator specializing in cross-cultural communication, multicultural issues, team building and conflict resolution. Ms. Shinazy has conducted multiracial focus groups in developing a version of the diversity training board game **Diversophy™** that focuses on gender, sexual harassment and sexual orientation. Ms. Shinazy has been an instructor at De Anza College, Director of Diversity for the Lincoln School, Providence, RI, and in 1985, co-founded Physiological Consultants in Bryn, PA, a corporate consulting and counseling firm.

Nanci E. Luna Jimenez is a trainer, educator, evaluator and researcher in the areas of cultural and gender diversity in the United States and abroad. Ms. Luna Jimenez will lead interactive ses-

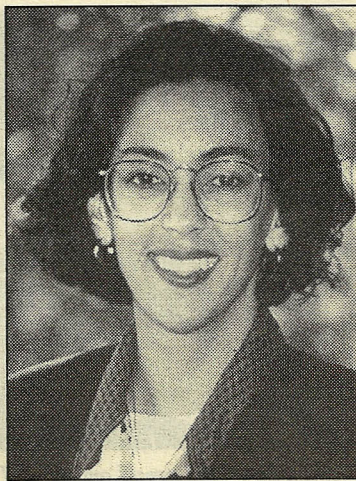
sions utilizing the diversity training board game **Diversophy™** and will be instrumental in compiling a version of the game dealing with international business persons' concerns after the passage of NAFTA. Ms. Luna Jimenez has led diversity training, evaluated training and educational programs and has taught at the University of California at Santa Cruz where she is a Ph.D. Candidate. She is a Ford Foundation Fellow and a graduate of Yale University.

Welcome! The Santa Cruz Area Chamber of Commerce extends its warmest and very best wishes to you both.

For additional information about George Simons International, contact Ms. Amy Zuckerman at 426-9608.



Nancy E. Luna Jimenez



Malati Shinazy